



Transportation Demand Management

- Designate a Transportation Management Coordinator
- Provide information regarding transportation programs and services on the property management website
- Provide transit screens in each building
- Provide one year car-share or one year Capital Bikeshare memberships for all residential units each time the unit turns over during the first five years of operation
- Provide convenient, covered, and secure bicycle parking for a minimum of 76 bicycles
- Provide space for at least two car sharing vehicles on site
- Reserve parking in the office parking garage for carpools
- Provide shower and changing facilities on-site for employees who choose to walk or bike to work
- Unbundle parking costs from residential and commercial leases
- Provide 22 short-term bicycle spaces



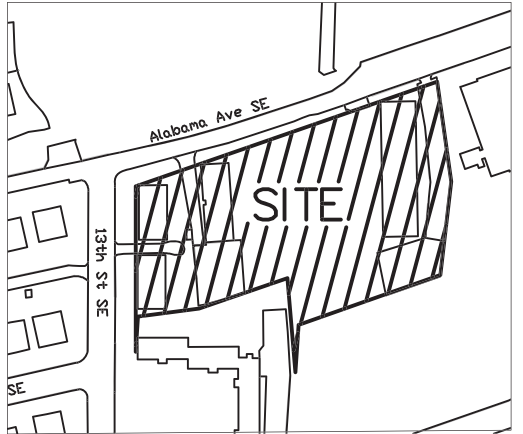
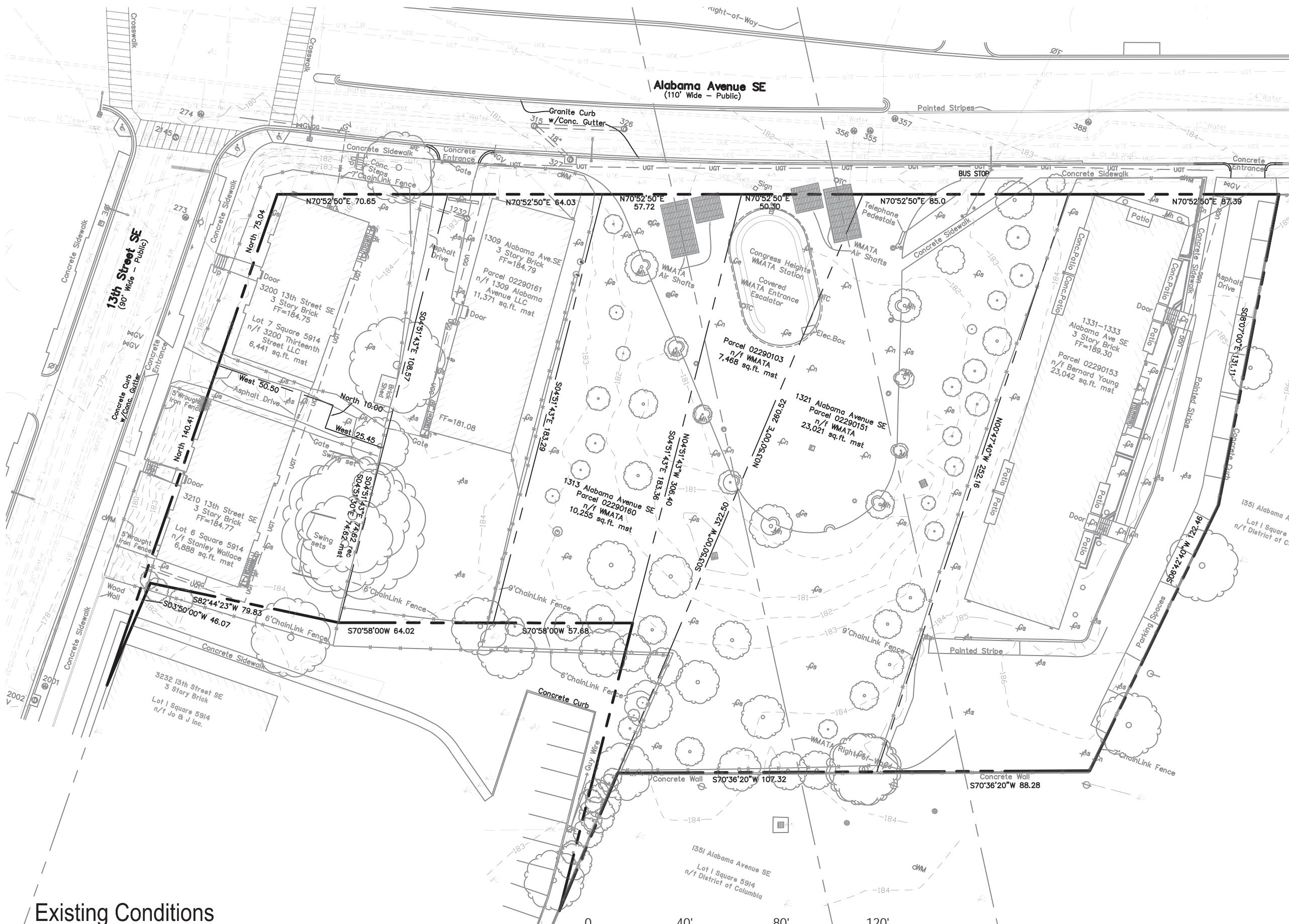
Summary of DDOT's Requests

DDOT Request	Applicant's Response
Design and install a signal at Alabama Avenue/15th Street	Provide Pro-Rata Contribution
Install 22 short-term bicycle spaces	Agreed
Unbundle parking costs from the price of all commercial and residential leases	Agreed
Coordinate with DDOT regarding public space issues, including: <ul style="list-style-type: none">• Work with DDOT on pedestrian upgrades at Alabama Avenue/13th Street• Proposed on-street parking along Alabama Avenue, including peak hour parking• Curbside signage plan	Agreed
Coordinate with DDOT regarding the installation of electric car charging stations	Agreed



Conclusions

- Residents of the proposed building would have a variety of transportation options:
 - The proposed project is located at the Congress Heights Metro Station
 - A Capital Bikeshare Station is immediately adjacent to the project,
 - Numerous Zipcars are located immediately across the street from the project, and
 - Seven Metrobus lines stop immediately adjacent to the project.
- The Applicant has committed to a number of transportation improvements and mitigation measures to offset the impact of the project:
 - Contribute the project's pro rata share of the cost to design and install traffic signal at Alabama Avenue/15th Street,
 - A comprehensive TDM plan, including all of the elements DDOT requested,
 - A loading management plan, and
 - Optimization of signal timings at locations within the study area.



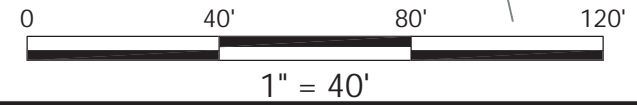
VICINITY MAP
SCALE: 1"=250'



WILES
MENSCH
CORPORATION

maurice walters architect

Existing Conditions
Congress Heights
Square 5914, LLC





View of site from across Alabama Ave.



View of metro entrance from across Alabama Ave.

Site Photos

Congress Heights

Square 5914, LLC

maurice **walters** | architect



FLYAROUND ANIMATION
TO BE SHOWN



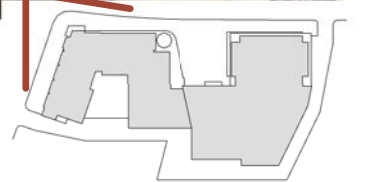
AERIAL ANIMATION
TO BE SHOWN



Rendering - Northwest Perspective

Congress Heights

Square 5914, LLC



maurice walters | architect